

VIOLA

**INSTRUMENTAL WARM-UPS
AND BUILDERS**

for individual or ensemble study

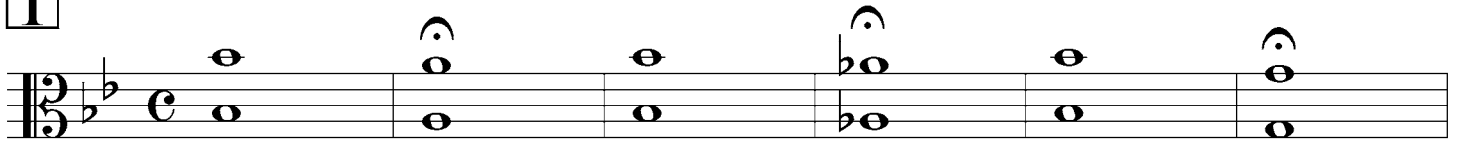
**Compiled by
Jeff Cranfill**

Jeff Cranfill Music

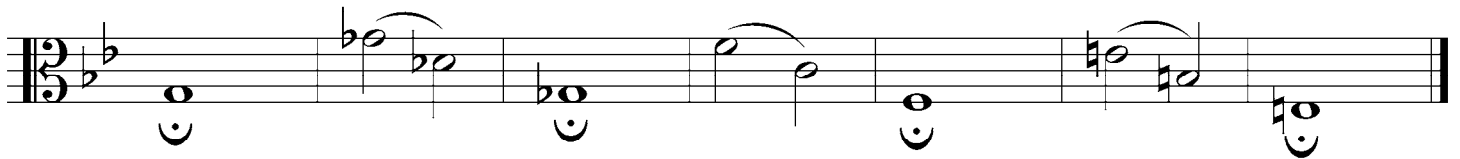
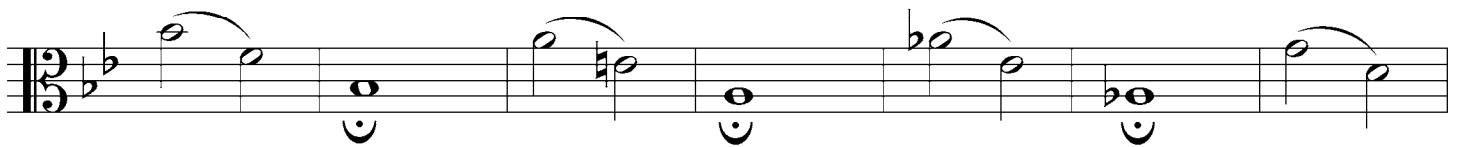
Viola

TONE BUILDERS

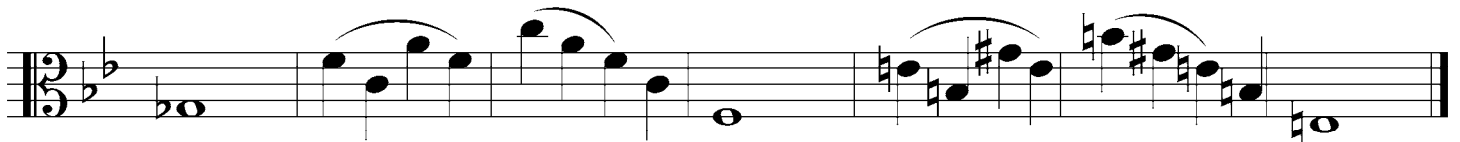
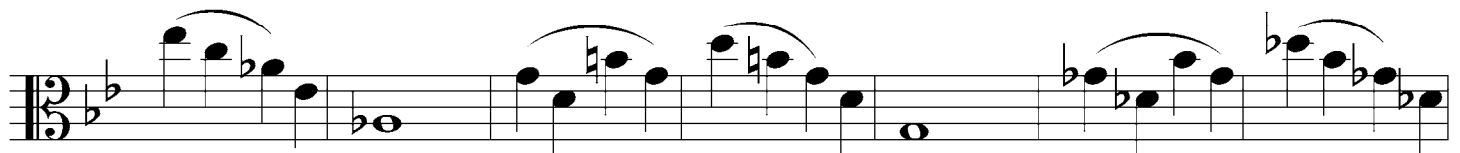
1



2



3



Viola

INTERVALS

An interval is the space between two notes

1

unison minor second major second minor third

1 2 3 4

major third perfect fourth augmented fourth perfect fifth

5 6 7 8

augmented fifth major sixth minor seventh major seventh octave

9 10 11 12 13

MAJOR SCALE INTERVALS

2

unison major second major third perfect fourth

14 15 16 17

perfect fifth major sixth major seventh octave

18 19 20 21

MAJOR SCALE DEGREES

3

22 23 24 25 26 27 28 29

1 2 3 4 5 6 7 8 (1)

BASIC CHORD TYPES

4

Major Minor Seventh Diminished Augmented

30 31 32 33 34

1,3,5 1, min. 3, 5 1,3,5,min. 7 1, min. 3, dim. 5 1, 3 aug. 5

CHORD PITCH DRILL

Page 1

each pitch functions as 1,3,5 and 7 in a chord.

C

Musical notation for the C major chord drill. The staff is in 3/4 time with a C-clef. It contains nine measures, each with a whole note chord. The notes are: 1 (C), 2 (E), 3 (G), 4 (C), 5 (E), 6 (G), 7 (C), 8 (E), 9 (G).

G

Musical notation for the G major chord drill. The staff is in 3/4 time with a G-clef and a key signature of one sharp (F#). It contains nine measures, each with a whole note chord. The notes are: 10 (G), 11 (B), 12 (D), 13 (G), 14 (B), 15 (D), 16 (G), 17 (B), 18 (D).

D

Musical notation for the D major chord drill. The staff is in 3/4 time with a D-clef and a key signature of two sharps (F# and C#). It contains nine measures, each with a whole note chord. The notes are: 19 (D), 20 (F#), 21 (A), 22 (D), 23 (F#), 24 (A), 25 (D), 26 (F#), 27 (A).

A

Musical notation for the A major chord drill. The staff is in 3/4 time with an A-clef and a key signature of three sharps (F#, C#, and G#). It contains nine measures, each with a whole note chord. The notes are: 28 (A), 29 (C#), 30 (E), 31 (A), 32 (C#), 33 (E), 34 (A), 35 (C#), 36 (E).

E

Musical notation for the E major chord drill. The staff is in 3/4 time with an E-clef and a key signature of four sharps (F#, C#, G#, and D#). It contains nine measures, each with a whole note chord. The notes are: 37 (E), 38 (G#), 39 (B), 40 (E), 41 (G#), 42 (B), 43 (E), 44 (G#), 45 (B).

B

Musical notation for the B major chord drill. The staff is in 3/4 time with a B-clef and a key signature of five sharps (F#, C#, G#, D#, and A#). It contains nine measures, each with a whole note chord. The notes are: 46 (B), 47 (D#), 48 (F#), 49 (B), 50 (D#), 51 (F#), 52 (B), 53 (D#), 54 (F#).

CHORD PITCH DRILL

Page 2

Gb

Musical staff for Gb chord drill, measures 55-63. The staff is in bass clef with a key signature of two flats (Bb and Eb). The notes are: 55 (Bb), 56 (Bb, Eb), 57 (Bb), 58 (Bb, Eb), 59 (Bb), 60 (Bb, Eb), 61 (Bb), 62 (Bb, Eb), 63 (Bb).

Db

Musical staff for Db chord drill, measures 64-72. The staff is in bass clef with a key signature of two flats (Bb and Eb). The notes are: 64 (Bb), 65 (Bb, Eb), 66 (Bb), 67 (Bb, Eb), 68 (Bb), 69 (Bb, Eb), 70 (Bb), 71 (Bb, Eb), 72 (Bb).

Ab

Musical staff for Ab chord drill, measures 73-81. The staff is in bass clef with a key signature of two flats (Bb and Eb). The notes are: 73 (Bb), 74 (Bb, Eb), 75 (Bb), 76 (Bb, Eb), 77 (Bb), 78 (Bb, Eb), 79 (Bb), 80 (Bb, Eb), 81 (Bb).

Eb

Musical staff for Eb chord drill, measures 82-90. The staff is in bass clef with a key signature of two flats (Bb and Eb). The notes are: 82 (Bb), 83 (Bb, Eb), 84 (Bb), 85 (Bb, Eb), 86 (Bb), 87 (Bb, Eb), 88 (Bb), 89 (Bb, Eb), 90 (Bb).

Bb

Musical staff for Bb chord drill, measures 91-99. The staff is in bass clef with a key signature of two flats (Bb and Eb). The notes are: 91 (Bb), 92 (Bb, Eb), 93 (Bb), 94 (Bb, Eb), 95 (Bb), 96 (Bb, Eb), 97 (Bb), 98 (Bb, Eb), 99 (Bb).

F

Musical staff for F chord drill, measures 100-108. The staff is in bass clef with a key signature of one flat (Bb). The notes are: 100 (Bb), 101 (Bb, F), 102 (Bb), 103 (Bb, F), 104 (Bb), 105 (Bb, F), 106 (Bb), 107 (Bb, F), 108 (Bb).

MAJOR SCALES AND ARPEGGIOS

1. **C**

1. C major scale and arpeggio in 3/8 time. The scale is written in a single line on a treble clef staff. It consists of two measures: the first measure contains the ascending scale (C4, D4, E4, F4, G4, A4, B4, C5) and the second measure contains the descending scale (B4, A4, G4, F4, E4, D4, C4). The arpeggio is written in a single line on a bass clef staff, consisting of two measures: the first measure contains the ascending arpeggio (C3, E3, G3, B3, C4) and the second measure contains the descending arpeggio (B3, G3, E3, C3). Both the scale and arpeggio are marked with a '3' above the notes, indicating a triplet.

2. **C Sharp**

2. C Sharp major scale and arpeggio in 3/8 time. The scale is written in a single line on a treble clef staff with a key signature of one sharp (F#). It consists of two measures: the first measure contains the ascending scale (C#4, D#4, E4, F#4, G4, A4, B4, C#5) and the second measure contains the descending scale (B4, A4, G4, F#4, E4, D#4, C#4). The arpeggio is written in a single line on a bass clef staff, consisting of two measures: the first measure contains the ascending arpeggio (C#3, E4, G4, B4, C#5) and the second measure contains the descending arpeggio (B4, G4, E4, C#3). Both the scale and arpeggio are marked with a '3' above the notes, indicating a triplet.

2A. **D Flat**

2A. D Flat major scale and arpeggio in 3/8 time. The scale is written in a single line on a treble clef staff with a key signature of two flats (Bb, Eb). It consists of two measures: the first measure contains the ascending scale (Db4, Eb4, F4, Gb4, Ab4, Bb4, C5, Db5) and the second measure contains the descending scale (Cb5, Bb4, Ab4, Gb4, F4, Eb4, Db4, C4). The arpeggio is written in a single line on a bass clef staff, consisting of two measures: the first measure contains the ascending arpeggio (Db3, F4, Ab4, C5, Db5) and the second measure contains the descending arpeggio (Cb5, Ab4, F4, Db3). Both the scale and arpeggio are marked with a '3' above the notes, indicating a triplet.

3. **D**

3. D major scale and arpeggio in 3/8 time. The scale is written in a single line on a treble clef staff with a key signature of two sharps (F#, C#). It consists of two measures: the first measure contains the ascending scale (D4, E4, F#4, G4, A4, B4, C#5, D5) and the second measure contains the descending scale (C#5, B4, A4, G4, F#4, E4, D4). The arpeggio is written in a single line on a bass clef staff, consisting of two measures: the first measure contains the ascending arpeggio (D3, F#4, A4, C#5, D5) and the second measure contains the descending arpeggio (C#5, A4, F#4, D3). Both the scale and arpeggio are marked with a '3' above the notes, indicating a triplet.

4. **E Flat**

4. E Flat major scale and arpeggio in 3/8 time. The scale is written in a single line on a treble clef staff with a key signature of one flat (Bb). It consists of two measures: the first measure contains the ascending scale (Eb4, F4, G4, Ab4, Bb4, C5, Eb5) and the second measure contains the descending scale (Db5, C5, Bb4, Ab4, G4, F4, Eb4, D4). The arpeggio is written in a single line on a bass clef staff, consisting of two measures: the first measure contains the ascending arpeggio (Eb3, G4, Bb4, Eb5) and the second measure contains the descending arpeggio (Db5, Bb4, G4, Eb3). Both the scale and arpeggio are marked with a '3' above the notes, indicating a triplet.

5. **E**

5. E major scale and arpeggio in 3/8 time. The scale is written in a single line on a treble clef staff with a key signature of three sharps (F#, C#, G#). It consists of two measures: the first measure contains the ascending scale (E4, F#4, G#4, A4, B4, C#5, G#5, E5) and the second measure contains the descending scale (D#5, C#5, B4, A4, G#4, F#4, E4). The arpeggio is written in a single line on a bass clef staff, consisting of two measures: the first measure contains the ascending arpeggio (E3, G#4, B4, E5) and the second measure contains the descending arpeggio (D#5, B4, G#4, E3). Both the scale and arpeggio are marked with a '3' above the notes, indicating a triplet.

6. **F**

6. F major scale and arpeggio in 3/8 time. The scale is written in a single line on a treble clef staff with a key signature of one flat (Bb). It consists of two measures: the first measure contains the ascending scale (F4, G4, Ab4, Bb4, C5, D5, F5) and the second measure contains the descending scale (E5, D5, C5, Bb4, Ab4, G4, F4). The arpeggio is written in a single line on a bass clef staff, consisting of two measures: the first measure contains the ascending arpeggio (F3, Ab4, Bb4, F5) and the second measure contains the descending arpeggio (E5, Bb4, Ab4, F3). Both the scale and arpeggio are marked with a '3' above the notes, indicating a triplet.

7. **F Sharp**

7. **F Sharp** Musical notation for the F Sharp major scale and arpeggio in 3/4 time. The scale is written in a single line with a treble clef and a key signature of two sharps (F# and C#). The scale consists of eight measures: four ascending and four descending. The final measure of the descending scale is followed by a whole note chord (F#3, C#3, F#3) with a fermata. The arpeggio is written in a single line with a treble clef and a key signature of two sharps, consisting of three measures: an ascending triplet, a descending triplet, and a final chord with a fermata.

7A. **G Flat**

7A. **G Flat** Musical notation for the G Flat major scale and arpeggio in 3/4 time. The scale is written in a single line with a treble clef and a key signature of two flats (Bb and Eb). The scale consists of eight measures: four ascending and four descending. The final measure of the descending scale is followed by a whole note chord (Gb3, Eb3, Gb3) with a fermata. The arpeggio is written in a single line with a treble clef and a key signature of two flats, consisting of three measures: an ascending triplet, a descending triplet, and a final chord with a fermata.

8. **G**

8. **G** Musical notation for the G major scale and arpeggio in 3/4 time. The scale is written in a single line with a treble clef and a key signature of one sharp (F#). The scale consists of eight measures: four ascending and four descending. The final measure of the descending scale is followed by a whole note chord (G3, B3, G3) with a fermata. The arpeggio is written in a single line with a treble clef and a key signature of one sharp, consisting of three measures: an ascending triplet, a descending triplet, and a final chord with a fermata.

9. **A Flat**

9. **A Flat** Musical notation for the A Flat major scale and arpeggio in 3/4 time. The scale is written in a single line with a treble clef and a key signature of three flats (Bb, Eb, Ab). The scale consists of eight measures: four ascending and four descending. The final measure of the descending scale is followed by a whole note chord (Ab3, Eb3, Ab3) with a fermata. The arpeggio is written in a single line with a treble clef and a key signature of three flats, consisting of three measures: an ascending triplet, a descending triplet, and a final chord with a fermata.

10. **A**

10. **A** Musical notation for the A major scale and arpeggio in 3/4 time. The scale is written in a single line with a treble clef and a key signature of three sharps (F#, C#, G#). The scale consists of eight measures: four ascending and four descending. The final measure of the descending scale is followed by a whole note chord (A3, C#3, A3) with a fermata. The arpeggio is written in a single line with a treble clef and a key signature of three sharps, consisting of three measures: an ascending triplet, a descending triplet, and a final chord with a fermata.

11. **B Flat**

11. **B Flat** Musical notation for the B Flat major scale and arpeggio in 3/4 time. The scale is written in a single line with a treble clef and a key signature of two flats (Bb and Eb). The scale consists of eight measures: four ascending and four descending. The final measure of the descending scale is followed by a whole note chord (Bb3, Eb3, Bb3) with a fermata. The arpeggio is written in a single line with a treble clef and a key signature of two flats, consisting of three measures: an ascending triplet, a descending triplet, and a final chord with a fermata.

12. **B**

12. **B** Musical notation for the B major scale and arpeggio in 3/4 time. The scale is written in a single line with a treble clef and a key signature of two sharps (F# and C#). The scale consists of eight measures: four ascending and four descending. The final measure of the descending scale is followed by a whole note chord (B3, D#3, B3) with a fermata. The arpeggio is written in a single line with a treble clef and a key signature of two sharps, consisting of three measures: an ascending triplet, a descending triplet, and a final chord with a fermata.

Viola

RANGE BUILDERS

Play as many measures as possible.

1 2 3 4

5 6 7 8

9 10 11 12

13 14 15 16

17 18 19 20

21 22 23 24